

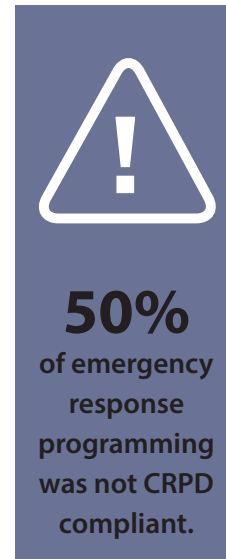
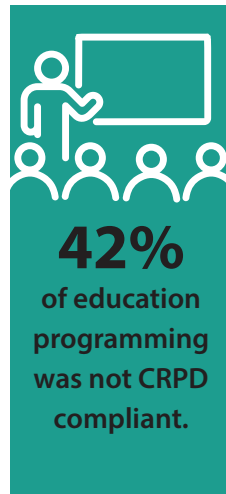
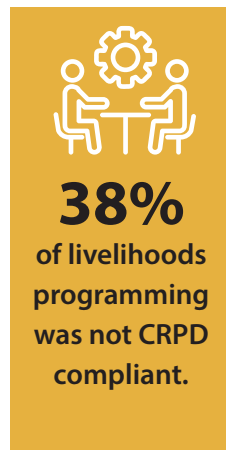
Funding \neq Inclusion

Segregation and CRPD non-compliance in Official Development Assistance

The Convention on the Rights of Persons with Disabilities (CRPD) has been ratified by over 180 states, and Article 32 focuses on international cooperation. This includes ensuring that international development programs are inclusive of and accessible to persons with disabilities.

Official Development Assistance (ODA) data from 2018 reveals that **36% of projects that included people with intellectual disabilities used methodologies that promoted segregation, violating the rights of persons with disabilities.** Donors continue to provide funding for segregated special education instead of inclusive education, sheltered employment instead of workplace inclusion, and fund the segregation of people with intellectual disabilities in refugee settlements instead of ensuring that mainstream refugee support strategies are inclusive.

In 2018:








“Article 32 of the CRPD has State Parties commit to “ensuring that international cooperation, including international development programmes, is inclusive of and accessible to persons with disabilities”.

Donors continuing to fund segregated education, congregated living facilities of any size, sheltered workshops, and any other non-CRPD compliant programming reinforce discrimination and represents a step backwards for people with intellectual disabilities and their families.

Donors should assess projects that include people with intellectual disabilities for compliance with the CRPD, seek guidance from OPDs with expertise on inclusion, and ensure that segregated practices are not funded by ODA.

The data cited on this fact sheet is sourced from the Organization for Economic Cooperation and Development (OECD) Development Assistance Committee (DAC)'s Creditor Reporting System (CRS), 2014-2018. A detailed methodology and the full data analysis and recommendations are available in Inclusion International's report [“Excluded from the Excluded: People with Intellectual Disabilities in \(and out of\) Official Development Assistance”](#).

Donors should seek the expertise of and collaboration with OPDs (organizations of people with intellectual disabilities and their families) to ensure that their commitments to CRPD compliance are honoured in their development work, and must develop internal policies that prohibit the funding of projects that violate the CRPD and promote segregation.

| THEME | CRPD COMPLIANT | CRPD VIOLATION |
|---|---|--|
| Education  | Examples of education projects that align with the CRPD include: <ul style="list-style-type: none"> ✓ Teacher training on inclusive pedagogy, student supports, etc. ✓ Funding supports for students with disabilities in inclusive classrooms. ✓ Funding civil society groups to advocate for inclusive education ✓ Working with the government to build capacity on inclusion in the public school system | Examples of education projects that are in violation of the CRPD include: <ul style="list-style-type: none"> ✗ Creating segregated schools for children with disabilities ✗ Creating of new segregated classrooms within mainstream schools ✗ Operational funding for segregated education without a clear transition plan to inclusive education ✗ Supporting education for children with intellectual disabilities outside of existing public government systems (e.g. schools run by international NGOs) |
| Livelihoods  | Examples of livelihoods projects that align with the CRPD include: <ul style="list-style-type: none"> ✓ Training for employers on making their workplaces more inclusive ✓ Projects that support placing people with intellectual disabilities in inclusive workplaces ✓ Making vocational training centres more inclusive of people with disabilities | Examples of livelihoods projects that are in violation of the CRPD include: <ul style="list-style-type: none"> ✗ Creating sheltered workshops that employ only people with disabilities ✗ Creating of social enterprises that employ only people with disabilities ✗ Any employment or livelihood activity where people with disabilities would be paid less than equal wages |
| Living in the Community and Housing  | Examples of community living projects that align with the CRPD include: <ul style="list-style-type: none"> ✓ Supporting the transition of people with disabilities from institutions to independent living ✓ Training for families on supporting their children with disabilities at home | Examples of community living projects that are in violation of the CRPD include: <ul style="list-style-type: none"> ✗ Creating new congregate living facilities, including large institutions or small group homes ✗ Refurbishing or improving the quality of congregated living facilities without a clear transition plan for moving people to independent living options |
| Service Provision  | Examples of service provision projects that align with the CRPD include: <ul style="list-style-type: none"> ✓ Building capacity of local and national governments to design public services and social protection systems to include people with intellectual disabilities ✓ Training mainstream service providers on how to be more inclusive of people with intellectual disabilities ✓ Training for families on how to access services for their child | Examples of service provision projects that violate the CRPD include: <ul style="list-style-type: none"> ✗ Creating new segregated services for people with intellectual disabilities ✗ Providing operational funding to segregated services (like day centres) without a clear transition ✗ Creating parallel service provision instead of investing in transforming existing structures (e.g. creating rehabilitation centres run by INGOs instead of working with local actors to make existing health and rehabilitation services inclusive) |
| Advocacy  | Examples of advocacy projects that align with the CRPD include: <ul style="list-style-type: none"> ✓ Training self-advocates on their rights and strategies for advocacy ✓ Training family members of people with intellectual disabilities on rights and advocacy strategies | Examples of advocacy projects that violate the CRPD include: <ul style="list-style-type: none"> ✗ Funding NGOs to advocate on behalf of the disability movement without OPD inclusion and leadership |